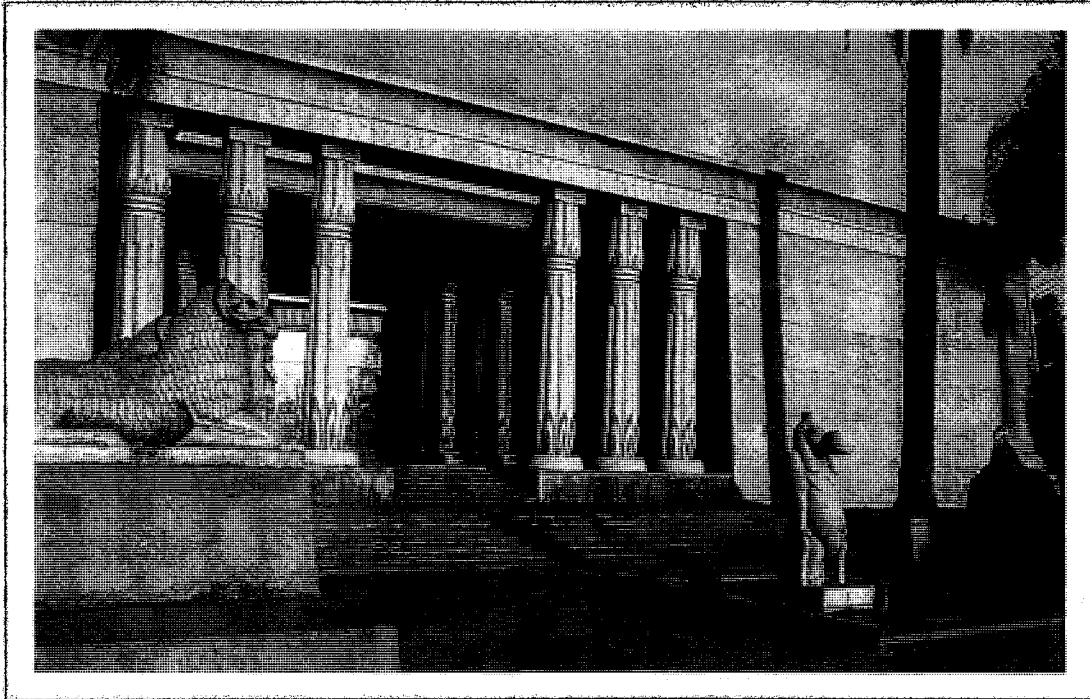


Commemorative Program

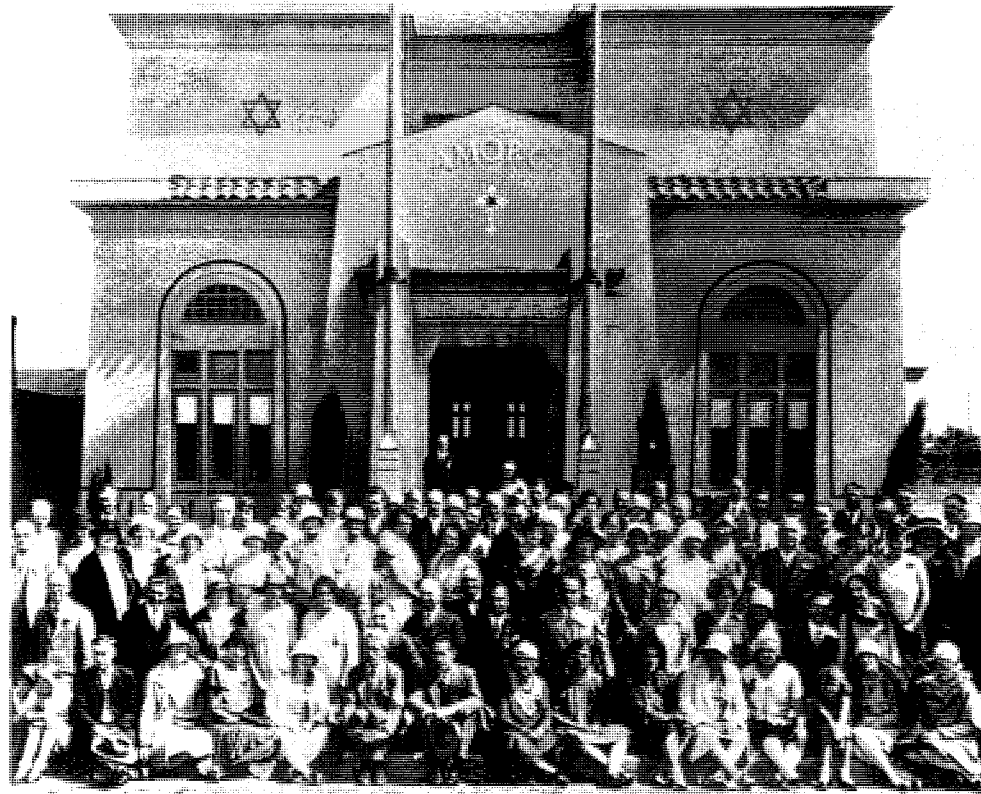
JUBILEE-92

"Come Celebrate the Park"



Rosicrucian Park's 65th Anniversary

Museum Day—May 10—Begins a Summer of Celebration Schedule
of Events, Festivities, & Special Presentations Rosicrucian Park
in the Valley of Heart's Delight: How & why the Rosicrucians came
to San Jose AMORC's Cultural Contribution to San Jose: 1927-1992
RCUI Classes and Special Weekend Events/Classes Who and What
Are the Rosicrucians? Rosicrucian Park's 65th Anniversary: A
panorama of history, events, and photos Map of Rosicrucian Park



1928 Rosicrucian Convention

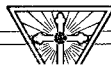
The Rosicrucians

The Rosicrucian Order, AMORC—headquartered in San Jose, California—was officially founded in 1915 by Harvey Spencer Lewis. It is a worldwide educational, philosophical organization that operates on a lodge system with affiliated groups in nearly 100 countries around the world. The Order expounds a system of metaphysical and physical philosophy intended to awaken and raise the consciousness of mankind. Through a system of personal instruction, AMORC's members are taught the significance and application of universal cosmic and natural laws. The Order teaches a *livable philosophy* leading to a happier and more fulfilling life.

The Rosicrucian Order, AMORC, has its traditional origins in ancient Egypt. It is said that Pharaoh Thutmose III, in 1489 B.C., gathered together a trusted group of twelve

scholars and philosophers and founded an order concerned with promoting mystical doctrines. Over 100 years later the brotherhood's teachings flowered during the reign of Pharaoh Akhnaton, called the world's first monotheist because of his worship of Aton, the Sun, to the exclusion of Egypt's numerous other gods and goddesses. The principles and objectives of this secret brotherhood then resurfaced in later cultures—Greece, Rome, and the Near East.

The ancient esoteric learning was rediscovered by European scholars in the early 12th century with the translation of Hebrew and Arabic texts, and by the beginning of the 17th century this mystical knowledge became widely known with the publication of the *Fama Fraternitatis*. The term "Rosicrucian" (derived from "rose" and "cross") was used to describe the new movement and its mystical concepts, and AMORC's modern-day studies are based upon these ancient teachings.



Rosicrucian Park's 65th Anniversary



Contents

■ — Welcome Letter from Grand Master Kristie E. Knutson	2
■ — Welcome Letter from San Jose Mayor Susan Hammer	4
■ — Rosicrucian Park in the Valley of Heart's Delight	6
■ — Rosicrucian Park's Sixty-Fifth Anniversary: <i>A panorama of historical events</i>	10
■ — Program and Schedule of Events	12
■ — Maps to and of Rosicrucian Park	25

The Rosicrucian Order, AMORC



Dear Members & Friends:

Sixty-five years ago Dr. H. Spencer Lewis had a dream. He visualized the establishment of beautiful Rosicrucian Park in San Jose, California, as the headquarters for the Rosicrucian Order, AMORC. He envisioned the Park with its authentic Egyptian-style buildings and splendid gardens as the spiritual home and center for Rosicrucians throughout the world.

From the very beginning he referred to this special place as “Rosicrucian Park”—even when the first headquarters consisted of only one building on a city lot at the edge of town.

And when a skeptical member from back East asked “Why do you call this small lot Rosicrucian Park?”, Dr. Lewis, in his customarily positive manner, answered, “Because that is the way that I see it will be in the future.”

The sixty-five years since that time have proven his vision to be true, and Rosicrucian Park has grown to encompass much of a large city block.

Today Rosicrucian Park annually attracts thousands of visitors from all over the world, and the Park is the destination of thousands of Rosicrucian travelers worldwide. The Rosicrucian Order and all Rosicrucians can be justly proud of Rosicrucian Park’s important cultural contributions to the San Jose community and the State of California through its Egyptian Museum, Planetarium and Science Center, Research Library, Alexandria Bookstore, and the classes and seminars offered through Rose-Croix University International.

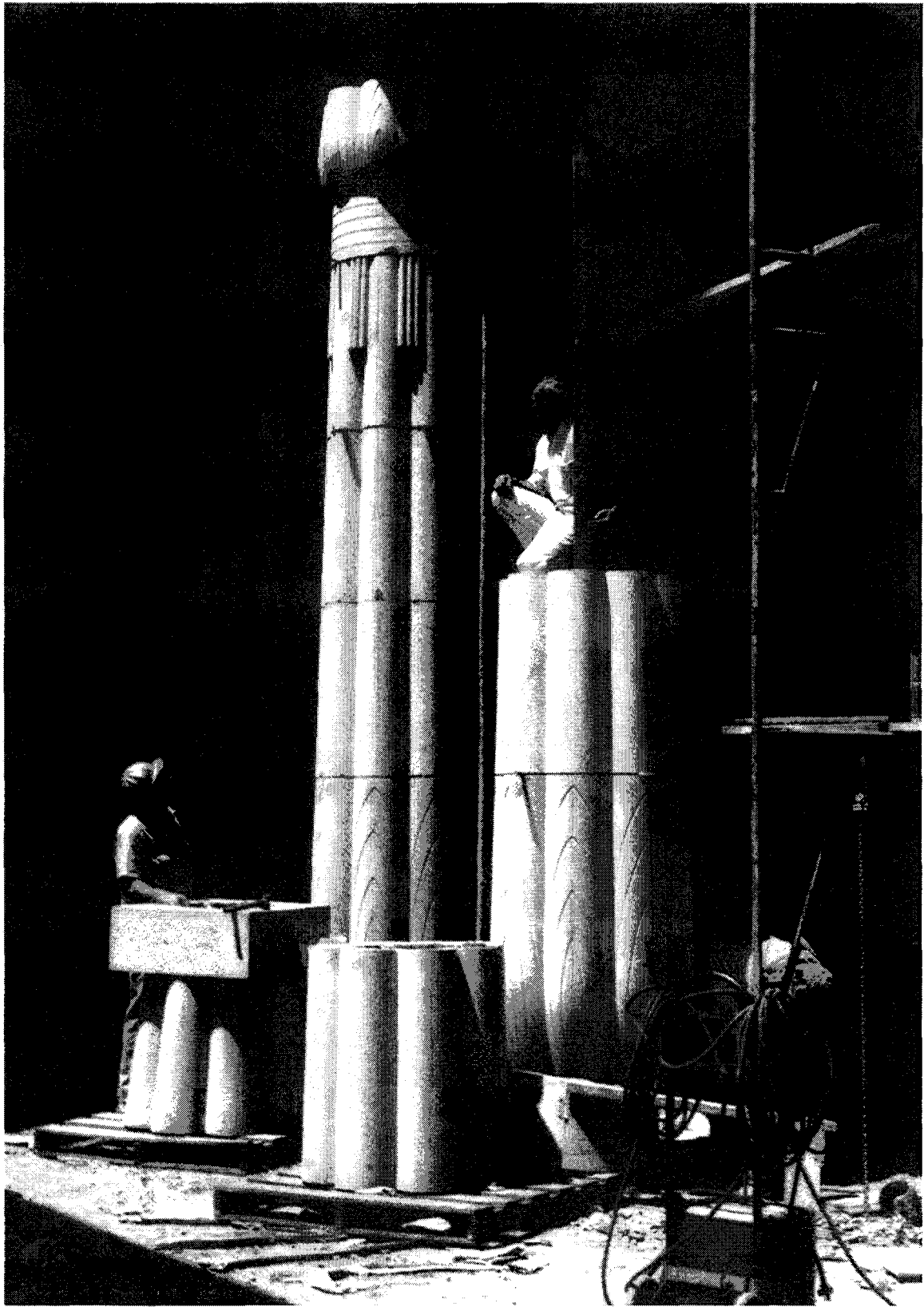
At this time our sincerest gratitude goes to all Rosicrucians worldwide who helped in the creating and building of Rosicrucian Park from its inception sixty-five years ago. And especially to former Imperators Dr. H. Spencer Lewis and Ralph M. Lewis—our heartfelt thanks for all you accomplished in making Rosicrucian Park what it is today. A dream come true!

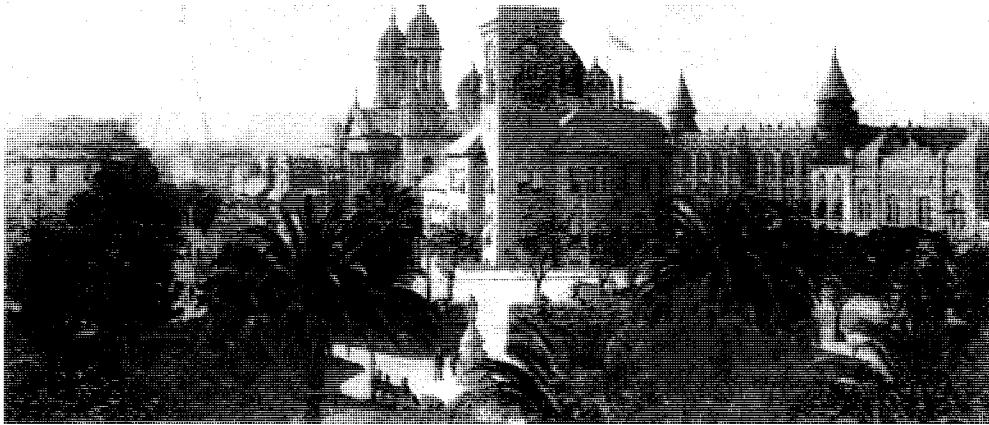
Sincerely,

A handwritten signature in black ink, reading "Kristie E. Knutson".

Kristie E. Knutson
Grand Master







San Jose, 1910

San Jose Historical Museum



SUSAN HAMMER
MAYOR

CITY OF SAN JOSE, CALIFORNIA

801 NORTH FIRST STREET
SAN JOSE, CA 95110-1792
(408) 277-4237
FAX (408) 277-3868

March 11, 1992

Dear Friends,

Congratulations on the 65th Anniversary of the establishment of Rosicrucian Park in the City of San Jose.

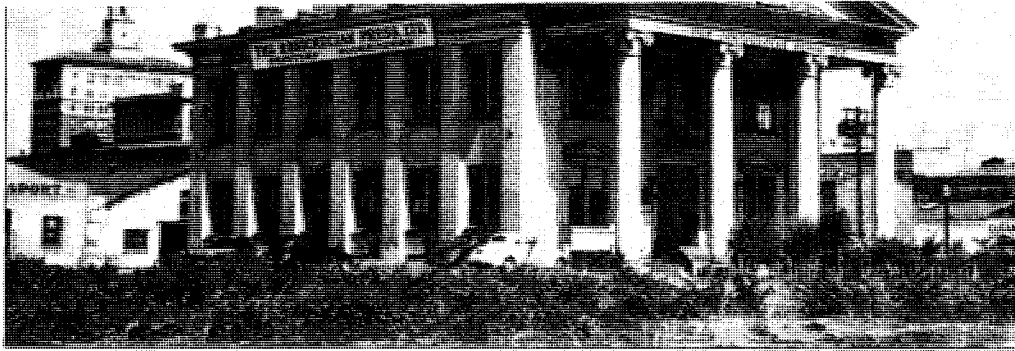
Rosicrucian Park is known worldwide for its beautiful grounds and unique Museums. The Egyptian Museum, Art Gallery, and the Planetarium and Science Centers are a regional resource for both students and interested adults. Travelers and school groups are especially drawn to the Egyptian exhibits. Rosicrucian Park has hosted various seminars, concerts, and public lectures which have brought cultural enrichment to a myriad of people and recognition to the area.

The activities planned for the month-long celebration sound exciting. I extend my best wishes for an enjoyable event and continued success.

Sincerely,

Susan Hammer
Mayor





among the tall grasses. The valley extended some 50 miles south from the bay, narrowing to about five miles in width until the foothills of the two opposing ranges shouldered together to close off the valley near the present town of Hollister.

Nowhere could a hunter-gatherer culture flourish better than in this favored valley. The year-round mild climate; the availability of fish, acorns, berries, and roots; and the gentle terrain combined to make this a generous place to live.

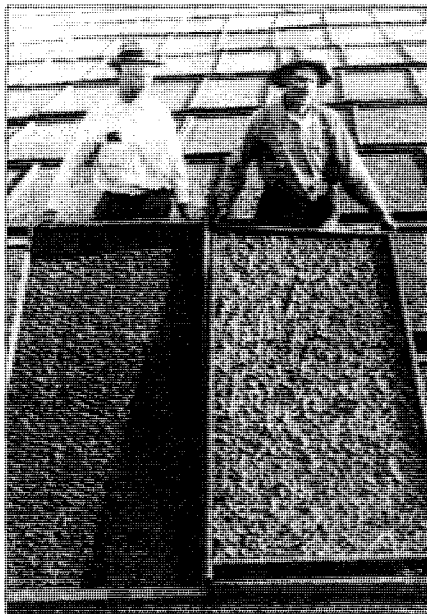
But all this was to eventually change.... The Spanish, Portuguese, and English began their explorations of the California coast in the mid-16th century. Spain's Juan Rodriguez Cabrillo and Sebastian Vizcaino, and England's Sir Francis Drake were notable among the many explorers, pirates, and adventurers who explored the California coast in the 16th and 17th centuries. However, the European settlement of California did not begin until 1769, when the Spanish founded San Diego. To convert the Indians, the Spanish and Franciscan fathers founded a series of 21 missions stretching north from San Diego. In 1777 the Santa Clara Mission was founded, and settlers from north-

ern Mexico made an extremely difficult trek to the Santa Clara Valley (over 900 miles) to establish El Pueblo de San Jose de Guadalupe—the first civil settlement in Alta California. Neither a *mission* nor a *presidio* (fort), the San Jose pueblo was an agricultural settlement—its purpose was to grow crops and supply food for the surrounding area so that California would

not be so dependent on provisions from faraway Mexico.

Thus began the immigration of settlers to the Valley of Heart's Delight which eventually brought people here from all parts of the world. The colorful flags of Spain and Mexico flew in turn over the San Jose pueblo, to be followed later by the distinctive Bear Flag of the brief-lived California Republic, and eventually the Stars and Stripes of the United States, which acquired California from Mexico in the 1848 Treaty of Guadalupe Hidalgo.

The Gold Rush of 1849 brought thousands of newcomers to California and transformed San Francisco into a great city overnight. Many of those who came for gold, stayed on to establish farms and build cities, and California became a state in 1850. The original large Spanish land-grant ranchos



California History Center, De Anza College, Cupertino



San Jose Historical Museum

be located in such a place, which thousands visit annually to see the newest and best systems of progressive education.”

In 1927 land in the vicinity of San Jose was still quite inexpensive and Dr. Lewis quickly found suitable property on the edge of a new residential section near the city limits. The first building erected at Rosicrucian Park faced a cherry orchard. Rail service from San Jose to all points was excellent, so that AMORC's mail could travel promptly to its members. In fact, so great was the added volume of mail caused by the establishment of AMORC's headquarters in this medium-sized city that San Jose's post office was changed from third class to *first class* almost immediately—the postmaster's salary increasing in proportion to his added responsibilities. As the administration offices of the organization grew, new employees could hope to work here in permanent rather than seasonal positions (as in the predominant canning industry), and it was said around town that the best secretaries in San Jose had their training at “The Rosicrucians.”

Dr. Lewis and the Rosicrucian Order were happy with San Jose from the beginning. In a later article in *The Mystic Triangle*, Dr. Lewis reflected on the move to California and the establishment of Rosicrucian Park: “We are certainly delighted with the location of Rosicrucian Park here in this Garden City of the valley they call *Paradise*. The climate for winter is wonderful and the spirit of California, so notable in the whole state, is distinctly manifest here. Rosicrucian Park is in the center of the newest residential section of San Jose, within

two squares of the main highway that leads from Los Angeles to San Francisco. . . . The Administration Building is in Egyptian style of design and color and the grounds of the Park surrounding the building will be laid out with tropical shrubbery, broken by Italian cypress trees and occasional Egyptian ornaments.”

And in remarking on Santa Clara Valley's bountiful produce, Dr. Lewis commented: “Most of you throughout the country are eating every day some of the products of this Paradise of America. In this Santa Clara Valley grows most of the fruit that finds its way into the high grade canning companies of California, and eventually into your homes. . . Do you eat California prunes, raisins and walnuts, plums, pears, peaches, olives, cherries, apricots, almonds? They come from this section of California. . . With the highest average summer temperature set at 80 and the lowest winter temperature set at thirty—with warmth during the midday of winter—you can understand why this section is called the Paradise, with its rolling hills of green spotted with hundreds of natural wild flowers and its mountaintops tipped with snow like a contrasted decoration to beautify the continuous panorama of enchanting scenery. Certainly we are happy back in the West again . . .”

And what did San Jose think of Dr. Lewis and the Rosicrucians? Any initial wariness was soon eased by Dr. Lewis' ready friendliness, open mind, and careful business practices. Dr. Lewis could talk with anyone, and everyone from deliverymen to bank presidents soon became acquainted with this man of the mind

(continued on page 21)

SIXTY-FIFTH ANNIVERSARY

by Cynthia Stretch

1927

AMORC Headquarters Arrives in San Jose

Attracted by the beautiful semi-rural setting of the *Garden City*, its proximity to supply centers in Oakland and San Francisco and connecting transportation systems, and weather that fosters long distance radio transmissions, AMORC decides to move its operations to a piece of property in the heart of the Santa Clara Valley. The first buildings to be erected are an administration building, radio towers, a power plant and a studio.

"We are certainly delighted with the location of Rosicrucian Park here in this Garden City of the valley they call Paradise. . . . you can understand why this section is called the Paradise, with its rolling hills of green spotted with hundreds of natural wild flowers and its mountain tops tipped with snow like a contrasted decoration to beautify the continuous panorama of enchanting scenery." —The Mystic Triangle, January 1928

auditorium in San Jose, it is used during the summer for Rosicrucian Conventions and throughout the year on Sundays for public lectures given by Emperor H. Spencer Lewis. In addition, the facilities



are loaned for many musical and dramatic productions by local groups. Flags from every state and country represented by convention delegates hang from the exposed rafters beneath the ceiling.

"The first session of the convention was held this evening. It was not only the opening of the convention but the occasion for the dedication of the new Francis Bacon Auditorium. . . . the chimes in the large belfry pealed forth a melody that could be heard for several miles distant The large stage with its footlights, Moorish background, and Moorish and Oriental panelling and draperies, as a proper stage setting in such a building, made a picture that seemed to take one out of America and back to the temples and buildings of Arabia" —Rosicrucian Digest, September 1931

1927

Rosicrucian Park founded.

1928

Administration Building & Annex built.

AMORC San Jose begins radio broadcasts on station 6KZ.

1929

The Mystic Triangle becomes The Rosicrucian Digest.

1931

Original Amenhotep Shrine erected to commemorate the Rosicrucian initiation held in Luxor Temple, Egypt, in 1929.

1931

Francis Bacon Auditorium

In need of a facility to host conventions, AMORC erects an auditorium named after Sir Francis Bacon. The largest





1934

**Rose-Croix University
Established**

H. Spencer Lewis' dream of a Rosicrucian university and college is first discussed at the 1929 Convention. Greeting the idea with enthusiasm, delegates vote to establish a fund to build the university. By 1933, the first courses in the fundamentals of healing, physics, psychology, philosophy and chemistry are planned for the opening session in the summer of 1934. The new building houses an amphitheatre, chemical laboratory, physics laboratory, workshops and offices.

"This new building is certainly a marvel of completeness and of efficiency in every modern sense. The [many rooms] afford ample opportunity for all of our officers and higher members who are specializing in certain tests of the mystical Cosmic laws to prove all of the teachings and postulations contained in our monographs and lectures."

—Rosicrucian Forum, August 1934

"... this makes the AMORC in North America today a unique institution and you should be proud of the fact that you are a member of a society or movement that is associated with a university and institution of real research and real investigation." —Rosicrucian Forum, August 1934

1934

Research Council Formed

Men and women who wish to contribute to the research work of the Rosicrucian

Order may apply for membership in the newly formed National Research Council of the Rose-Croix University. Upon acceptance into the Council, members are encouraged to send written comments and reports so that the news of their discoveries can be added to Rosicrucian monographs and magazines, and can be tested and tried in the new university laboratories.

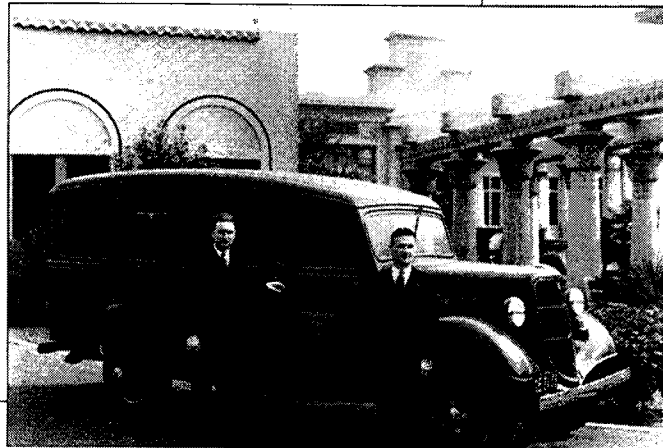
"Probably no other metaphysical or mystical organization in the world has had so much help and cooperation from scientific people as has AMORC. It helps to make our organization more efficient, more helpful to its members, and up to the minute in all of its instructions and in all of its application of the teachings and principles."

—Rosicrucian Forum, August 1934

1935

**The Courier Car Makes Its First
Cross-Country Tour**

AMORC inaugurates a good will activity, the Courier Car. Leaving from San Jose in the spring, arriving on the East Coast by summer, and returning to the West before the snows begin, the Car gives three presentations in each city it visits. For members, the staff demonstrates the principles of Rosicrucian teachings, shows motion pictures of Headquarters in San Jose, answers questions about how to conduct studies, and helps members to form new chapters. The public is introduced to the Rosicrucian Order during luncheons at local Rotary, Lions, and Kiwanis Clubs.



1932

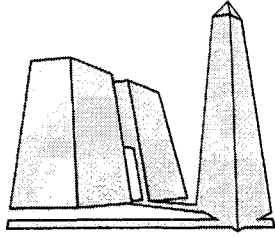
First separate Rosicrucian Museum, containing a full-sized reproduction of a rock tomb and authentic Egyptian and Mesopotamian artifacts.

Kepher-Ra Club distributes food and clothing to one or two families in San Jose each week.

Shipping department and post office added to administration annex.

1933

The *Fountain of Living Waters* in the Rose-Croix plaza dedicated to the memory of past Grand Master Charles Dana Dean.



Jubilee '92—

The 65th Anniversary of Rosicrucian Park

Jubilee '92 celebrates the extraordinary vision, planning, building, and growth over many years that have resulted in today's Rosicrucian Park. The Rosicrucian Museums' annual Museum Day Celebration on Sunday, May 10, kicks off a month and a half of events celebrating 65 years of cultural activities at Rosicrucian Park.

International Museum Day
Sunday, May 10, 1992

International Museum Day recognizes the mission of museums around the world in preserving cultural and artistic heritages. Join us for an entire day of FREE fun activities for the whole family.

Schedule of Events

- 9-10 a.m.** **Unrestricted Tripod and Flash Photography in the Egyptian Museum**
Photographers are offered this once-a-year opportunity to bring in their equipment and photograph our unique collection. Generally, only hand-held available-light photography is allowed. Be photographed with The Mummy and glamorous Antony & Cleopatra!
- 10:30 a.m.** **Planetarium Show: *Star Story***
"Grandfather" answers questions and tells stories about the Sun, Earth, and Moon. This half-hour show is especially written for young children.
- 11 a.m. &
3:30 p.m.** **Planetarium Show: *Cosmic Celebration***
The Rosicrucian Planetarium, one of the first in this country, opened to the public in 1936. Join us in celebration and take a look back at the history of astronomy and some of the history of our own planetarium.
- 12, 2, & 4 p.m.** **Weni's Workshop: *How to Write in Ancient Egyptian***
Visit Weni, the scribe, at his workshop in Alexandria (the book store), where you will learn to write your name in hieroglyphs.
- 12-4 p.m.** **Rare Book Display**
Examine intricate images of the Orient in the 19th-century books of *David Roberts Journeys to the East*, on exhibit in the Rosicrucian Research Library.
Ali Baba Belly Dance troupe performs ethnic Egyptian dances.
- 1 p.m.** **Planetarium Show: *The Celestial Nile***
Find out what ancient Egyptians knew about astronomy and how they used their knowledge to build the Great Pyramid.
- 2 p.m.** **Planetarium Show: *Our Piece of the Universe***
Tour the planets of our solar system and find out what else there is to see in our piece of the universe.
- All Day** — Hourly door prizes 12:45 - 4:45 p.m. in the Museum and Alexandria bookstore.
— Tours of our full-sized Egyptian Rock Tomb replica
— Impromptu gallery talks
— Art Gallery exhibit: *The Rosicrucians in San Jose*
— Food booths and an Egyptian bazaar will be staffed by the St. Antonius Coptic Orthodox Church from Hayward

The celebration continues!

Jubilee '92 — Schedule of Events

- May 10 - July 5 Art Gallery exhibit: *The Rosicrucians in San Jose***
This special exhibit will celebrate the cultural activities of the Rosicrucians, as led by H. Spencer Lewis and then Ralph Lewis, his son. Come share the memories! (*Seniors receive free admission to the museum from May 10 - July 5*)
- May 10-June 13 Planetarium Show: *Cosmic Celebration*** (see facing page for description)
Show times are 3:30 p.m. Saturdays and Sundays
- June 13 - 21 Weekend Course: *A History of the Esoteric and Visionary in Western Art, Part II: Early Modern Europe (A.D. 1600-1800)***
This fascinating series of four slide lectures (June 13, 14, 20, & 21) covers the entire history of visionary and esoteric art in Europe from the Middle Ages to the contemporary scene. Trends and styles from the Baroque era through the times of Cagliostro and St. Germain will be examined. Classes may be taken individually, as well as in a series. For more details, phone (408) 947-3600, ext. 690. *Instructor: Timothy O'Neill.*
- June 14 - July 5 Planetarium Show: *Cosmic Celebration*** (see facing page for description)
Show times are 12 noon on Sundays and Wednesdays, 10 a.m. on Mondays, and 1 p.m. on Fridays.
- June 27 Visit by Acorn A's Car Club to the corner of Park and Naglee at Rosicrucian Park**
The Rosicrucian Order AMORC moved from Florida to the "Valley of Heart's Delight" in 1927. Come help us recreate the period when vintage automobiles from 1927-31 will be in front of the museum at 11 a.m. on Saturday, June 27. Visitors in costume will receive free admission to the museum.
- June 28 Museum Day II**
The Mummy and Antony & Cleopatra will be on hand to greet you for a repeat of many Museum Day events, including Weni's Hieroglyph Workshop (12, 2, & 4 p.m.), the Ali Baba Egyptian Dancers (12-4 p.m.), special Planetarium shows, and hourly door prizes in the Museum and Alexandria bookstore.
- June 27 & 28 Weekend Course: *Masks and Psyche***
Alchemists of old practiced a transformative and healing art as they projected their unconscious complexes into their materials. Students will make plaster gauze or papier-maché masks, hear lectures, view a slide show of the instructor's work, and draw parallels between medieval alchemists as reported in the works of Jung, M.L. von Franz, E.F. Edinger and others. *Instructor: Barbara Muhlhauser*
- July 4 & 5 Weekend Course: *New Ideas in Quantum Physics***
If you think physics is painful, think again! Dr. Wolf employs wit and humor to make the subject come alive. He is a master at interpreting the new physics for lay persons and showing why these concepts are important. Using quantum physics as a base, Dr. Wolf's inquiring mind delves into the relationship between human consciousness, psychology, physiology, the mystical, and the spiritual.
Instructor: Fred Alan Wolf, Ph.D.

The Weekend Courses listed above are open to the public and sponsored by Rose-Croix University International. Established in 1934, the University serves members of the worldwide Rosicrucian Order in furthering its tradition of learning and experimenting with the mysteries of life on the spiritual, mental, and physical levels of man and nature. The University offers an entire series of fascinating classes for Rosicrucian members. Subjects covered include Metaphysics, Philosophy, Art and Culture of Ancient Egypt, Alchemy, Hermetic Philosophy, and many more.

1933

Rosicrucian Press, Ltd. (an independent corporation), on Julian Street in San Jose, begins printing literature for AMORC, the county, and other firms.

"... practically every member in our organization has one or more relatives ... or friends ... who doubt the integrity, the sincerity, and especially doubt the claims of the Rosicrucian Order of AMORC ... the Courier Car and its personnel ... conduct a ... meeting [so that people] can see for themselves ... that it was not a fanatical religious sect or cult, but a common sense, rational, educational, refined and cultured movement." —The Mystic Triangle, November 1927

of the clouds, or invisible things of the imagination, but with the practical and useful things of life, so the planetarium will attract cultured, thinking men and women of all parts of the west, and likewise the tourists from all parts of the world." —The Supreme Secretary, Rosicrucian Digest, 1936

"Those who live in small cities and towns and have never been within a planetarium do not know how simply and understandingly all of the magnificent laws and principles of the starry heavens and the planets can be demonstrated and how the body and mind can be lifted apparently up into space there to dwell among stars and planets and watch them performing their marvelous feats ... And to realize that this planetarium was designed, invented, created, and built here by Rosicrucians is something to make our members feel proud." —Rosicrucian Forum, June 1936

"The new Planetarium fits into the grounds like a jewel in a perfect setting. It suggested an emerald to me each time I looked at it." —Soror Rayburn, quoted in Rosicrucian Forum, October 1936



1934

Rose-Croix University Building erected.

1936

"Theater of the Sky" Dedicated

On July 13, in front of a crowd of hundreds of Convention delegates and members, Dr. Lewis dedicates the newly constructed planetarium to the memory of David Rittenhouse, an American astronomer and member of the early Rosicrucian settlement in Philadelphia. It is the fifth planetarium in America, and the first to grace a small town. The architecture is designed by Mr. Lewis, and the mechanical equipment used in the theater, including the Master Seismograph and Cosmic Ray Machine, is invented and built in California and the Park's own craft shops under Mr. Lewis' direction.

"Just as our Oriental Museum at Rosicrucian Park brings thousands of visitors today who are surprised to find that the Rosicrucian Order does not deal exclusively with intangible things

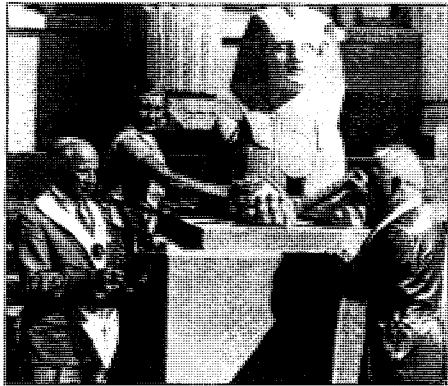
"As I sit here in the Forum and look out of my sanctum windows and see one side of the Planetarium in its beautiful oriental colors and lines, I think too that it is a beautiful jewel with a magnificent setting here in Rosicrucian Park. ...

As scores upon scores of men and women come here to the Sunday night or Thursday night demonstrations in the Planetarium, and go away with the exclamations on their lips that they have learned more about the beauties of the heavens and the mysteries of the Cosmic than they ever knew before, I become happier and more enthusiastic about the Planetarium ... It will be for many years to come a living, vital testimonial to the unselfish purposes as well as to the artistic ideals and principles of our organization."

—H. Spencer Lewis, Rosicrucian Forum, October 1936

1936

Planetarium Building completed & opens for first star show.



"One of the interesting features of this Planetarium, not found in any other Planetarium in the world, is the creation at the beginning of the demonstration of clouds of fog, showing how in the beginning of the creation of the universe, moisture preceded the creation of everything else. In our Planetarium these clouds or fogs are so real that they block out the beautiful dome sky and cause the entire room to become moist and cool to such an extent that those present can feel the fog-like moisture or dew on their hands and faces. As those clouds gradually move by, through the movement of winds beautifully demonstrated, the clear blue sky above and beyond is revealed and gradually all stars make their appearance."

—Convention Secretaries, Rosicrucian Digest, September 1937

1938

**Rosicrucian Order Heals
the Sick**

The Rose-Croix Research Institute and Clinic, a non-profit, humanitarian organization, is established at Forest

and Bascom Avenues in San Jose. Sponsored by the members of the Hierarchy of the Order and members of the other high degrees, its goal is to conduct research into cures for patients afflicted from conditions which are a "mystery to doctors". Physicians in the higher degrees of the Rosicrucian Order are to be trained in the drugless *Rosicrucian technique* of healing, developed by the Emperor. Within the year there is a waiting list of over a hundred people, and Dr. Roberto Herdocia, a Rosicrucian, physician and surgeon practicing in San Francisco and Los Angeles, is appointed chief physician.

"For instance, one of the studies will be in regard to cancer, its prevention, its economical and efficient cure, and the raising of the spirits and hopes of those who are victims of it. Today, too many victims of cancer are being treated by being burned by radium or x-ray, or mutilated by the knife. We believe, and have proved in three years of experimental work along this line, that cancer can be cured without resorting to this dangerous burning or the use of the knife. And we believe we have found many important points bearing upon the origin of cancer, the cause and prevention of cancer." —Rosicrucian Forum, December 1938

"But the principal thing is that we are proving day by day and hour by hour through the work of the specially trained Rosicrucian doctors, that the vibrations of the human body can be altered and can be used to destroy and remove all disease, just as we are teaching in our monographs." —Rosicrucian Forum, April 1939



1937

Spanish Division of the Rosicrucian Order transferred to Rosicrucian Park.

1937/38

Replica of Cleopatra's Needle (Heliopolis obelisk) erected.

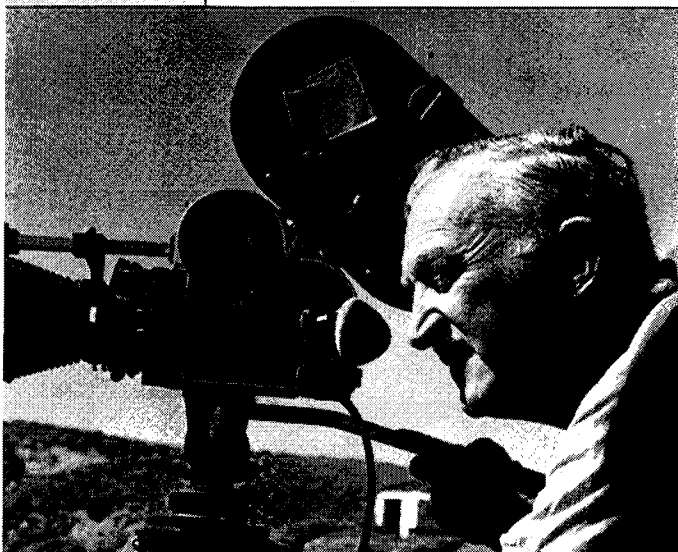
1939

Rosicrucian Research Library completed.

" . . . it takes a complete harmonious unit like this clinic and its patio and all of its rooms and grounds to give the patient that kind of environment, that kind of mental attitude and that kind of help and treatment that makes his or her body become new and younger and healthier and stronger again."
—Rosicrucian Forum, April 1939

accumulated knowledge, but would be used in addition to push outward the boundaries of learning to add to that which is already known. "
—Rosicrucian Forum, August 1939

"If outstanding discoveries are made they will not be secreted, but imparted to outside scientific circles if and when they are disposed to accept them. No matter how fantastically or radically different or opposed to Orthodox belief a theory may be, if in the opinion of this Rosicrucian researcher it is founded upon natural laws it will be investigated." —Rosicrucian Forum, August 1939



1939

Dr. H. Spencer Lewis passed through transition. Ralph M. Lewis becomes Imperator.

1939

Rose-Croix Library Established

Housed in the "research building" adjacent to the Rose-Croix University, the new library is dedicated during the University's summer session. Its first librarian is Frater Orval Graves, a professor of philosophy at Rose-Croix University and former librarian of the University of California. Books on the subjects of the sciences, "useful arts", music, history, philosophy, metaphysics, occultism, and Rosicrucianism are to be available for members. Rare books and books out of print are planned for the future.

"In the dedication address it was said that the entire building housing the library, biology laboratory, class rooms, and offices was to be devoted not to a mere preservation of established and

1945

AMORC Aids Members Abroad

AMORC collects donations from members under its "Rehabilitation Plan," a post-war relief program. The staff at Rosicrucian Park arranges shipments of money, food and clothing to members throughout the world. Foreign jurisdictions, many of them having lost all their assets during the war, are rebuilt from the fund.

"We are very badly in need of clothing because all our belongings were burnt during the war. . . . There are six children in our family—burlap clothing is still used as blankets and some of our kinsmen who depend on us still wear bark from trees. Secondhand clothing or something like that will be greatly appreciated.

"The first box containing two new women's dresses was received with your letter. Two days later fifteen boxes came all together . . . All of us rejoiced with thanksgiving, for God sent His blessing through our brothers and sisters over there . . . We have a great faith that the generous Americans are the medium of His blessings on earth."
—Letters to AMORC, member in the Philippines, March and June 1945

Imperator Ralph Lewis spearheads rebuilding of European Rosicrucian groups at 1946 conference in Brussels, Belgium.

1948

Supreme Temple Construction Begins

Limited by the confines of the Administration building in which it is housed, the original Supreme Temple cannot accommodate the demands of a growing membership and an ever-increasing number of candidates for initiation. Backed by donations solicited from its members, AMORC hires Mr. Earle C. Lewis, architectural designer, to create the structural and architectural drawings for the temple, and to design the interior fixtures and furniture. On July 17, 1949, the new Supreme Temple, a reproduction of the Temple of Dendera on the exterior, and a reproduction of the temple of Medinet Habu in the interior, is dedicated.

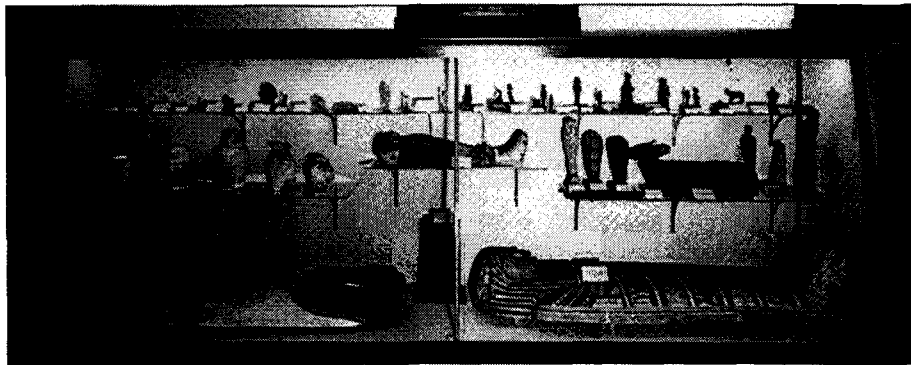
"... each of the four primal elements, fire, air, water, and earth, were consecrated and their esoteric meaning explained. For the occasion sacred waters from the Nile, Ganges, and Indus rivers were brought from those remote places to be used in the proper consecration of the temple."

—Rosicrucian Digest, October 1949

1950

AMORC Opens First Art Gallery In San Jose

The second floor of the Administration building, vacated by the relocation of the Supreme Temple, is designated as an art gallery. Officially presented to the people of San Jose in 1950, it is free



of charge to the public. By the mid-50's, it will have brought approximately 75 outstanding collections of art from all over the world to the city, sponsored lectures by exhibiting artists, formed a partnership with the Art League of San Jose, and have sponsored an art contest for California high school art students.

"San Joseans who are interested in painting have long regretted that this city does not have a municipal gallery in which exhibitions could be held . . ."



Now, with no pounding of drums, the Rosicrucian Order is giving distinguished aid to the situation. Last month the curator of the Egyptian Museum, located out at Rosicrucian Park, arranged for the exhibition of the first post-war display of contemporary German paintings, . . ."

—Editorial, San Jose Evening News, July 31, 1951

1949

Supreme Temple finished & dedicated—modeled after Egypt's Great Temple of Dendera.

1951

Official monographs of the Rosicrucian Order are transcribed into braille.

1958

As Convention highlight Egyptian Consulate arrives by helicopter in center of Rosicrucian Park.

1959

Studio Building erected. Building contains full sound & film studio.

1960

Employees of Rosicrucian Park send 500 pounds of clothing to the head of the Chilean Red Cross following the disaster there.

The Venerable Narada Maha Thera, chief incumbent of the Amarapura Sect of Buddhism from Ceylon, visits Rosicrucian Park.



By the 1950s, activities conducted at Rosicrucian Park for the benefit of local and visiting members are well-established. There are winter and summer courses at the Rose-Croix University on scientific, artistic, historical, philosophical, and mystical topics. The Research Library, Museum and Planetarium are free to members at all times. The Emperor of the Order presents lectures about ancient civilizations in the

amateur musicians of the Rosicrucian orchestra. An annual convention, the high point of the year, brings 1,000 delegates to San Jose from around the world each July.

1955

AMORC Encourages Local Cultural Activities

Charging a token fee for its use, the Order attracts many civic groups to the Francis Bacon Auditorium. Throughout the year of 1955, "Stars of the Future," a popular amateur talent program, is broadcast over Radio Station KEEN from the auditorium. In the years to come, it will host performances by the San Jose Young People's Chamber Music Society, concerts and lectures by the San Jose Opera Guild, and the opening night reception of *Fantasy in Film*, the second annual San Jose Film Festival.

1958

AMORC Offers Programs for the Community

Boys, aged 8 to 15, begin an eight-session science project designed by a San Jose State College physics profes-



Francis Bacon Auditorium, illustrated with motion pictures made during his world travels. On Tuesday evenings, a convocation is performed in the Supreme Temple, including an address upon a mystical or philosophical subject based upon the Rosicrucian teachings. Each month there is a Sunday concert performed by professional and talented

S I X T Y - F I F T H A N N I V E R S A R Y

sor and Rosicrucian staff members, emphasizing astronomy, electronics, and solar energy. The 60's will see an innovative service on the Park entitled "Museum Touch Program" in which blind students from local secondary schools and San Jose State College are permitted to touch ancient Egyptian artifacts in the museum while guides add verbal explanations. And in the following decade, AMORC will collaborate with the San Jose HOPE workshop to employ handicapped persons on a regular basis in the assembling of Rosicrucian mailings.

"For more than three decades, the Order has contributed richly not only to its own members but to the cultural life and values of this community. Its Egyptian museum, planetarium, research library, the facilities of Rose-Croix University and the pleasant grounds of Rosicrucian Park itself are community assets of the first magnitude." Editorial, San Jose Mercury, July 11, 1969

1963

Annual Convention Delegates Welcomed by San Jose

The *Mercury News* takes the opportunity to recognize the presence and the activities of the Rosicrucian Order in



San Jose on the occasion of the 39th Annual International Convention of the Rosicrucian Order. Approximately 1,000 Rosicrucians from Europe, Africa,

the Far East, Australia, New Zealand, Mexico, Canada, and Latin America, are flooding into the city to attend the festivities.

"... we feel it is fitting that San Jose—and this newspaper—should welcome this group of thinking men and women with warm heart and open arms. We can never too frequently have in our midst a humanitarian, thoughtful group of people such as this In this era of argument, opinion and international conflict, careful, humanitarian thinking is at a premium." —San Jose Mercury News, July 14, 1963



Construction of new Museum.

1967

New Museum Dedicated

On Saturday, November 26th, hundreds of people gather in the fountain courtyard in front of the new structure for the dedication ceremony. The City Manager and Mayor of San Jose pay tribute to the Rosicrucian Museum as a cultural contribution to the city. The structure, designed by Earle Lewis, is inspired by Egyptian Temple architecture, and is the only Egyptian museum in the world which houses its collection in an Egyptian-style building.

"We have a great debt to the ancients It is remarkable how many things commonplace to us, which we think are of our times, actually began in Egypt. Everything from beer to taxes, with a world of other things in between, began in Egypt." —Rosicrucian Forum, April 1966

1967

New Rosicrucian Egyptian Museum opened—the only museum in the world designed in authentic Ancient Egyptian style.

1970

New AMORC Administration Building erected.

1973

AMORC's Emergency Relief Fund aids Managua, Nicaragua, Chapter after it is totally destroyed by fire following earthquake.

1983

12,000 pound cast concrete statue of Thutmosis III dedicated on December 5.

1984

AMORC participates in excavations at Tell el-Amarna at the request of the Egypt Exploration Society.

1989

Rosicrucian Park
Attracts Scholars:
Smithsonian Institution
presents programs on
latest findings about
Mars & Antarctica.
Egyptian archeologist
Dr. Zahi Hawass
lectures on latest
discoveries near Great
Pyramid.

1991

Park employees
donate money for
Russian winter famine
relief.

1969

AMORC Solicits Nominations for Humanitarian Award

In a tradition that has lasted for decades, members of the Rosicrucian Order submit nominations for the Rosicrucian *Humanitarian Award*. The award celebrates individuals from any country in the world whose outstanding service to either their community or to humanity in general has previously gone unrecognized. In order to maximize recognition in the community in which the humanitarian works, AMORC notifies the local press of the upcoming event. The Rosicrucian responsible for the nomination presents the recipient with a certificate, engraved with his/her name and a commendation.

"Fortunately for the possible salvation of our civilization, there are individuals who are motivated by those impulses which have always been lauded as examples of the finest qualities of a humanitarian. . . . It is these people . . . who are perpetuating the traditions of what is true culture and what an advanced civilization should represent. They are worthy of recognition They should be encouraged by the knowledge that their activities in an otherwise self-seeking society are appreciated."

—Rosicrucian Forum, June 1969

1971

Administration Building Dedicated

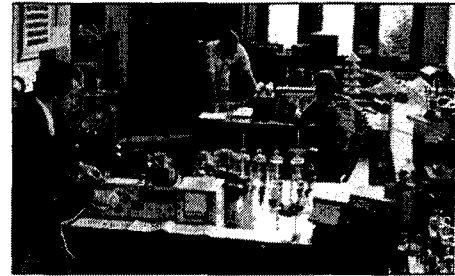
The volume of daily correspondence, study materials, information and guidance handled by the AMORC staff demands more space and equipment than the old administration building can provide. The new structure, patterned after the great temple of Ramses III, Medinet Habu, is designed by architect Earle C. Lewis and adorned with bas-reliefs produced by the AMORC art department.

"I note . . . the magnificent edifices [on Rosicrucian Park] This outer display of wealth and power turns me off. Why not instead spend the money on

spreading the knowledge so that more people become enlightened?"

—Letter from prospective member, 1973

"[The Park's buildings] exist to enrich and supplement the member's individual studies AMORC is not a mail-order school. Membership is a living experience requiring practical application of principles. The organization invests in the institution of Rosicrucian Park; for an investment in the institution is an investment in membership." —Response, as quoted in the Rosicrucian Forum, by Frater Marion Redd, June 1973



1982

Rosicrucian Research Recognized

In a two-part program on the Rosicrucian Order, KGO-TV features the work being conducted in the Research Laboratory at Rosicrucian Park. The program focuses on two successful parapsychology experiments involving telepathy and insight. But this is only a small percentage of investigations by Rosicrucian scientists into human consciousness and psychic functioning. Conclusions have been reached on many topics, including the human aura, metaphysical healing, and psychokinesis.

" . . . we hope that [these researches] have been helpful to you—that they have helped to deepen your understanding and ability to demonstrate natural laws and that they have been helpful to your desire to create conditions of love, harmony, and peace in our world."

—Ralph M. Lewis to members, Rosicrucian Digest, April 1980

Rosicrucian Park (from page 9)

who could readily discuss so many different interesting subjects. San Jose found the Rosicrucians to be a knowledgeable group of people, and California's open-mindedness and willingness to experience new ideas melded easily with the Rosicrucian outlook on life. As Rosicrucian Park expanded and new buildings were added—one of the first planetariums in California, a science and university building, the Egyptian Museum, and an extensive research library—San Jose began to realize the unique cultural benefits provided the city by the Rosicrucians. After all, how many other medium-sized cities, even in California, could boast a magnificent park with Egyptian-style buildings set amidst beautiful gardens, and the educational and cultural assets offered by Rosicrucian Park? In the words of a local newspaper reporter of years ago: "A little bit of Egypt fell out of the sky one day—on the block bounded by Park, Naglee, Chapman, and Randol."

To familiarize San Joseans with the Order and its purpose, Dr. Lewis (a former advertising man) ran impressive full-page advertisements in San Jose newspapers. One ad opened with the inviting headline: "Let Us Get Acquainted", and then asked the reader, "We are your neighbors here in San Jose, we are known all over the world—but do you know the Rosicrucians?" The ad explained that hundreds of Rosicrucians—many of them prominent men and women—from all parts of the world, visit San Jose each year, spending time at Rosicrucian Park and in the charming city itself. "Hundreds of local residents visit our Oriental Museum and Egyptian buildings monthly. . . . We have made San Jose known to millions throughout the world. . . ." These ads also fully explained the Order's purpose and invited local residents to join the Order and "find out more about themselves, natural laws, and the universe."

San Jose was impressed, and hundreds flocked to the regularly scheduled concerts and lectures, free to the public, in the new Francis Bacon Auditorium (San Jose's first large-size auditorium). Thus marked the beginning of a long-term cultural and community-involvement relationship between Rosicrucian Park and the city in the Valley of Heart's Delight.

Today San Jose is a great city, although it has never really thought of itself that way. The sleepy cannery town of the 1920s experienced a major growth explosion in the decades following World War II, making San Jose one of the fastest growing cities in the U.S. Orchards, vineyards, and fields were quickly replaced with miles of tract housing and industrial parks. Blossom festivals were no longer appropriate as the valley's nickname was changed to "Silicon Valley" with the proliferation of the computer industry. San Jose and the surrounding communities have run together and the metropolitan area now has 1.5 million people. In fact, San Jose is now the largest city in Northern California, eclipsing in population San Francisco, its more prominent neighbor to the north.

But to those who walk the winding paths through green lawns and past beds of blossoming flowers amidst the colorful buildings of Rosicrucian Park, the surroundings make the valley's older name come alive again, for here it is still the Valley of Heart's Delight. Δ

Congratulations on the past 65 years

**We will be supporting you
through the next 65 years.**



**Walker Security Services
1522 Burrell Court
San Jose, CA 95126
(408) 244-2535**

*Dedicated to providing quality security
to make your life a little better.*

Discoveries
 Salutes the
65th Anniversary
 of
Rosicrucian Park



(Happy Birthday!)

Discoveries
 207 Ramsay Alley,
 Alexandria, Virginia 22314
 (703) 548-9448 • (800) 237-3358

*Traditional and Contemporary Art
 from Egypt & West Africa*

Congratulations
 on
65 Years

Grant Thornton

Accountants and
 Management Consultants

One California Street, Suite 2100
 San Francisco, California 94111
 (415) 986-3900

150 Almaden Boulevard, Suite 600
 San Jose, California 95113
 (408) 275-9000

CONGRATULATIONS AMORC
 On the 65th Anniversary at Rosicrucian Park

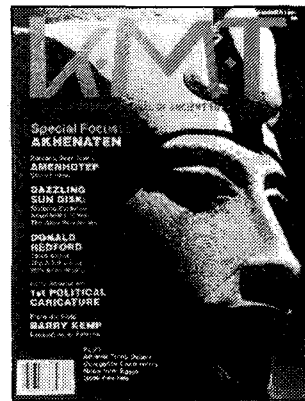
from
KMT Communications
 publisher/distributor of

- *KMT, A Modern Journal of Ancient Egypt* (see sidebar)
- *Amarna Letters*. Limited edition 96-page perfect-bound softcover volume on the turbulent late 18th Dynasty. Lavish b/w illustrations. \$24.95 (incl. postage).
- *The Tomb of Queen Tiye*. Second edition (with new introduction and annotated bibliography) of controversial 1907 discovery of Tomb 55 in Valley of the Kings. A valuable tool for student and scholar alike. Hard \$59.95, Soft \$39.95 (incl. postage).
- *Egypt, The Living Past*, by T.G.H. James. 208-page hardcover volume which explores Egypt from a new perspective—continuity Delves into the very nature of the Egyptian people themselves—how the past continues to shape the present. 120 superb color photos. \$49.95 (incl. postage), will be \$54.95 after July 1.

To order or for further information write

KMT Communications
 1531 Golden Gate Avenue, San Francisco, CA 94115

CA RESIDENTS must add 7.25% SALES TAX to total order



KMT
 The Journal exclusively
 on the history, art history and
 archaeology of ancient Egypt
4 QUARTERLY ISSUES

- \$32 for U.S. domestic (Calif. res. must add \$2.60 sales tax)
- US\$36 Canadian surface mail
- US\$38 Other Foreign surface mail
- £21 U.K. surface mail
- £25 U.K. airmail

NAME _____

STREET _____

CITY _____

STATE _____ ZIP _____

Inquire about back issues available



Aerial view of San Jose, c. 1930

San Jose Historical Museum

Congratulations
to
The Rosicrucian Order, AMORC
and to Rosicrucian Park
for
65 Years of Community Service
from
TriGraphics, Inc.

3303 De La Cruz Blvd.
Santa Clara, CA 95054
(408) 988-0822

Congratulations

to
The Rosicrucian Order,
AMORC

from

Tadco Supply

568 Almaden Avenue
San Jose, CA 95110
(408) 275-6944
FAX (408) 280-1373

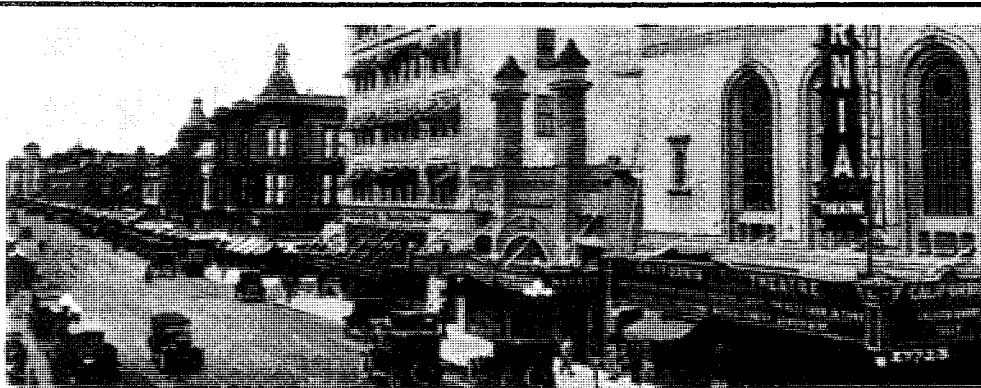
Serving the entire Bay Area for 35 years, we offer janitorial supplies and equipment; as well as lights, fixtures and ballasts for most applications. We also offer a complete inventory of paper products.

CONGRATULATIONS ON YOUR 65th ANNIVERSARY!

**Darrell Dukes
Insurance Associates
(408) 288-9800**



**Insuring the English Grand
Lodge since 1980**



San Jose Historical Museum



RecycleNOW

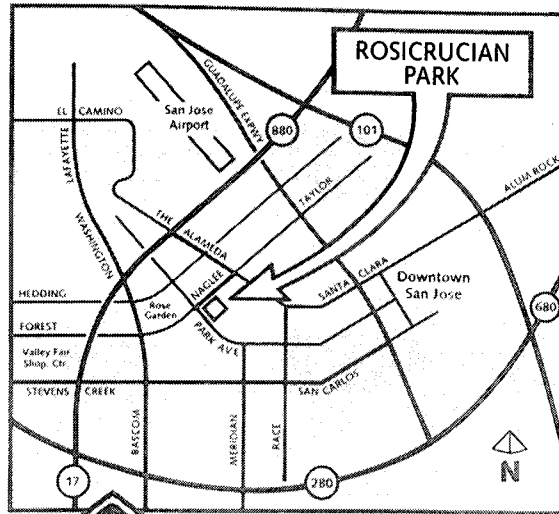
**Congratulations
to Rosicrucian Park
for 65 Years
from**

BFI

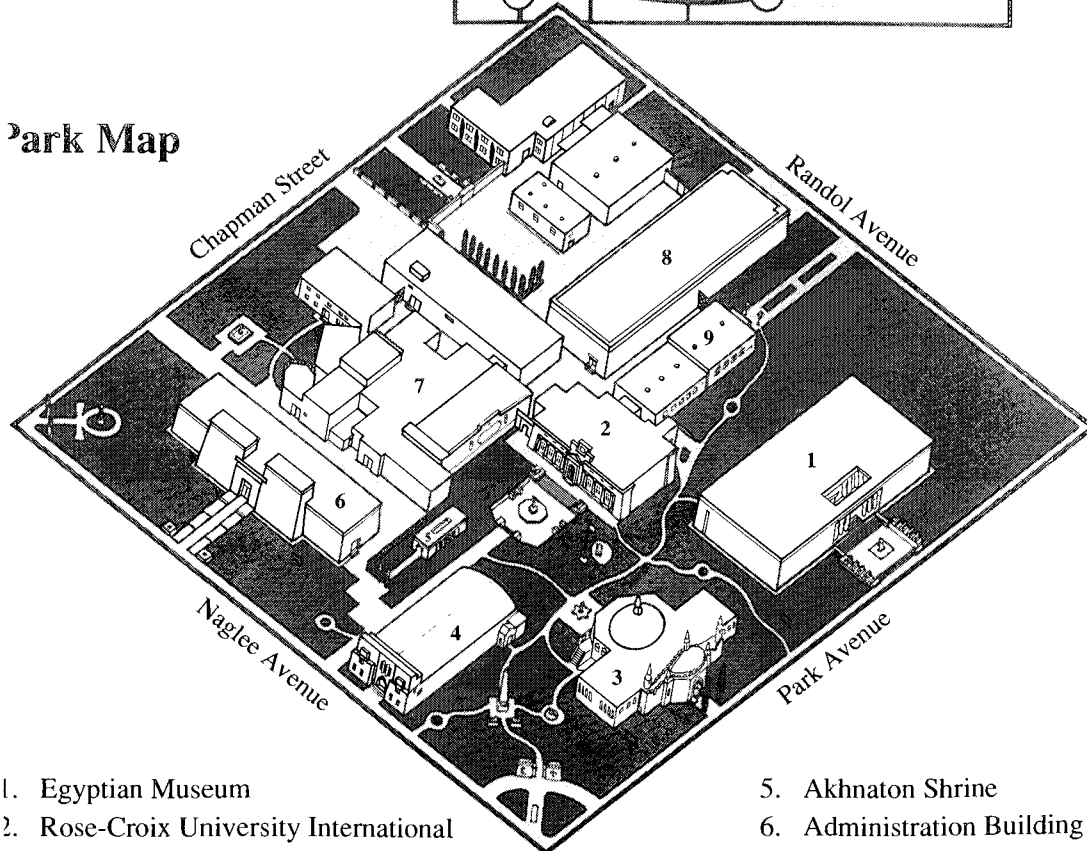
1995 Oakland Road
San Jose, CA 95131

Rosicrucian Park, San Jose, California

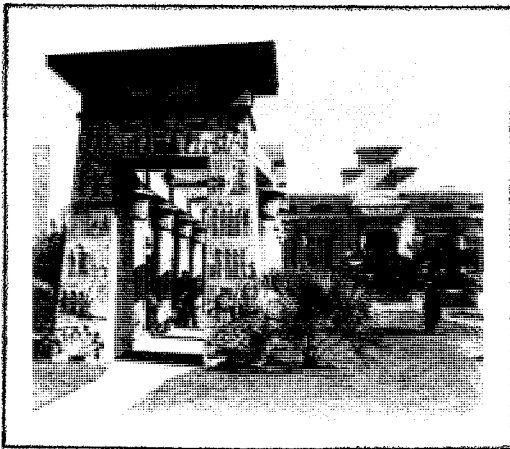
Rosicrucian Park is located 2 miles west of downtown San Jose at the intersection of Park and Naglee Avenues. Best freeway access: Take I-880 to The Alameda exit.



Park Map



- | | |
|---|----------------------------|
| 1. Egyptian Museum | 5. Akhnaton Shrine |
| 2. Rose-Croix University International | 6. Administration Building |
| 3. Planetarium | 7. Administration Annex |
| 4. Francis Bacon Auditorium /
Alexandria Bookstore | 8. Supreme Temple |
| | 9. Research Library |



ROSICRUCIAN
PARK AT 65
JUBILEE-92

